

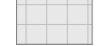
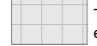





-  Carrelage imitation parquet
-  Faux-Plafond et soffites (220 min)
-  Carrelage 60x60 cm
-  Terrasse en dalles sur plots
-  Terrasse en klinkers

APPARTEMENT

A21

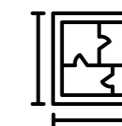
1



1



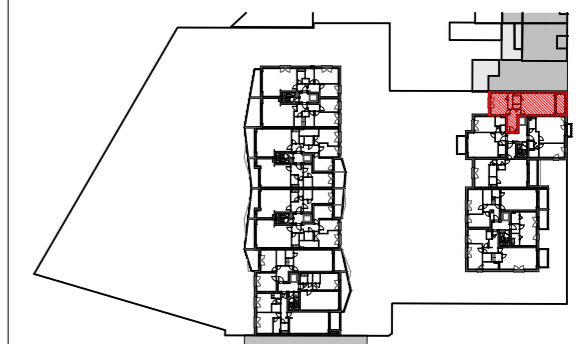
71,0 m<sup>2</sup>



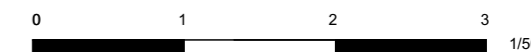
6,9 m<sup>2</sup>



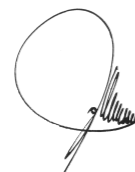
SITUATION



AV. DE SELLIERS DE MORANVILLE



ARCHITECTES



RÉALISATION



PROJET

AVENUE DE SELLIERS DE MORANVILLE

Avenue de Selliers de Moranville, 31, 1082 Berchem-Sainte-Agathe, Belgique

PLAN DE VENTE

DATE

12/04/23

ECHELLE APPARTEMENT

1/50 A21